

IMAGE OF THE FORTNIGHT

PRESENTER:-DR.K.VAMSEE KRISHNA

(2nd year post graduate)

MODERATOR:-DR.RASI PRIYA

MD(RADIOLOGY)

A 55 Year old male smoker came with complaints of 3 weeks history of cough,chest pain, and dyspnoea .

Increased shortness of breath with minimal exertion.

What is the abnormality in this x ray
Name the sign



Decreased breath sounds on left side
Dullnote on percussion.



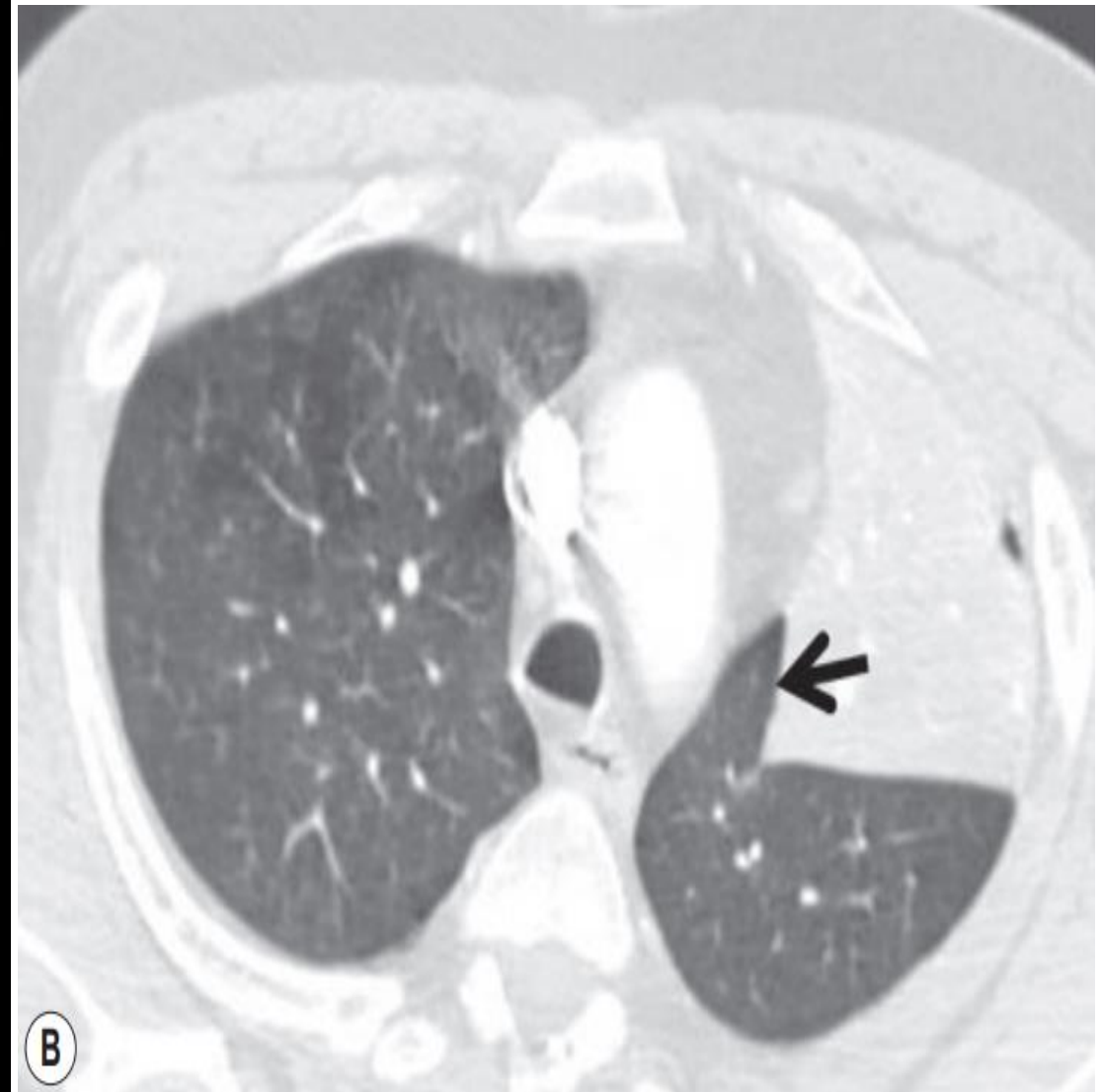
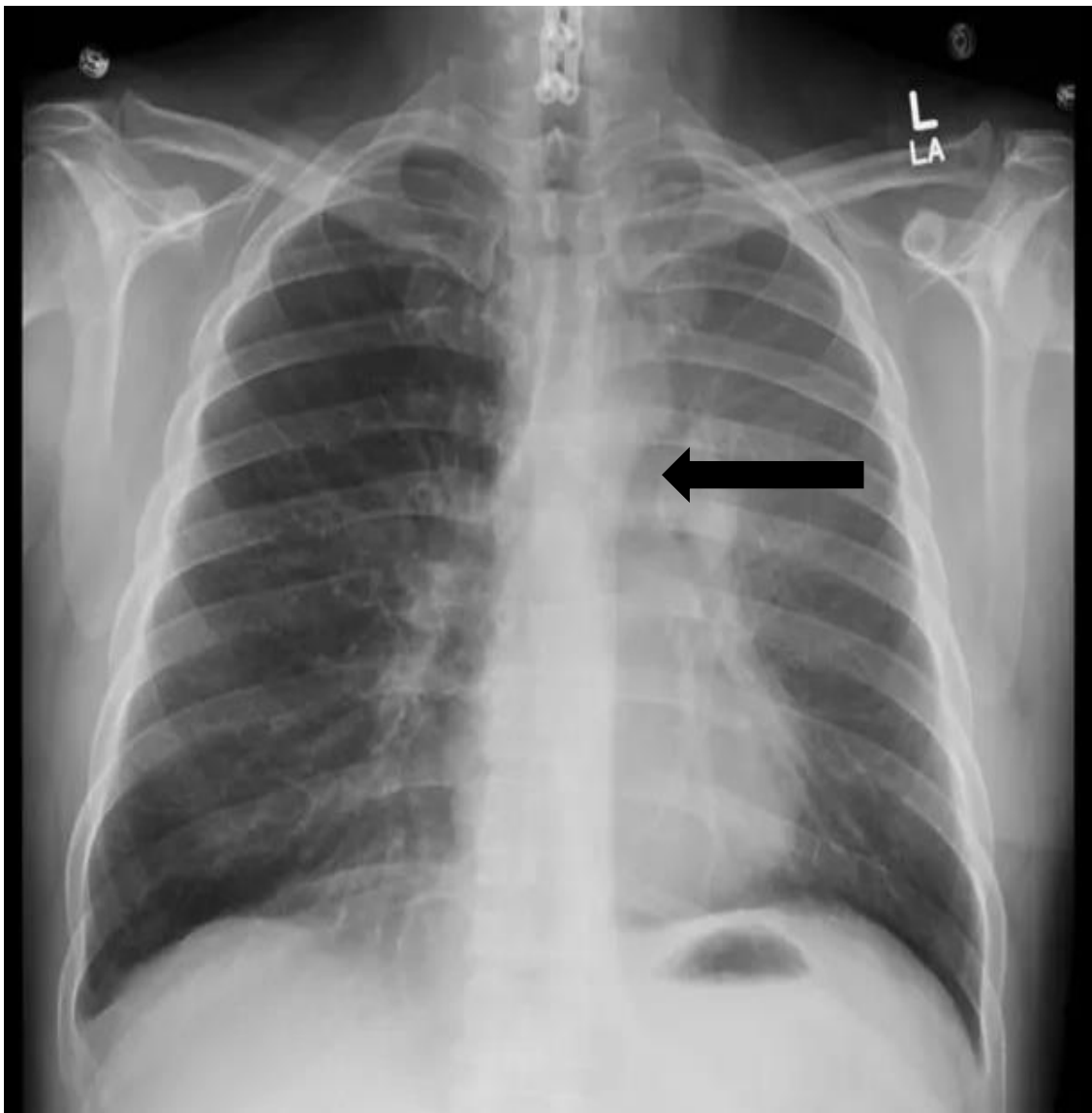


Fig: (A) left upper lobe collapse demonstrating paramediastinal lucency (arrow). (B) Computed tomography shows interposition of aerated lung between the collapse and the aortic arch (arrow).

Luftsichel sign

- **Luftsichel sign:**

- Paramediastinal translucency due to the overinflated **superior segment** of the ipsilateral lower lobe occupying the space between the mediastinum and the medial aspect of the collapsed upper lobe.
- More common on the left and is regarded as a typical appearance of left upper lobe collapse.